



Submittal Data Sheet  
 1-Ton Duct Concealed and Heat Pump  
 FDMQ12WVJU9RXL12WMVJU9

Model	Indoor Unit		FDMQ12WVJU9	
	Outdoor Unit		RXL12WMVJU9	
			Cooling	Heating
Power Supply			1 $\phi$ , 208 - 230 V, 60 Hz	
Capacity Rated (Min. - Max.)	Btu/h	10,800 (6,500 - 2,400)	12,500 (6,300 - 7,000)	
Running Current (Rated)	A	5.90 - 5.34	5.93 - 5.36	
Power Consumption (Rated)	W	1,213 - 1,213	1,221 - 1,221	
Power Factor (Rated)	%	98.8 - 98.8	99.0 - 99.0	
SEER2 / HSPF2		14.60	8.90	
EER2 (Rated)	Btu/h·W	8.90	—	
COP2 (Rated)	W/W	—	3.00	
Piping Connections	Liquid	in. (mm)	$\phi$ 1/4 (6.4)	
	Gas	in. (mm)	$\phi$ 3/8 (9.5)	
	Drain	in. (mm)	I.D. $\phi$ 1 (25) / O.D. $\phi$ 1-1/4 (32)	
Heat Insulation			Both Liquid and Gas Pipes	
Max. Interunit Piping Length	ft (m)	65-5/8 (20)		
Max. Interunit Height Difference	ft (m)	49-1/4 (15)		
Chargeless	ft (m)	32-3/4 (10)		
Amount of Additional Charge of Refrigerant	oz/ft (g/m)	0.21 (20)		
Indoor Unit			FDMQ12WVJU9	
Heat Exchanger	Rows x Stages, Fin/Inch		3 x 26, 18	
	Fin Spec / Tube		Multi Slit Fin / $\phi$ 5 Hi-XA Tube	
Airflow Rate	H / M / L	cfm	371 / 318 / 261	371 / 318 / 261
		m3/min	10.5 / 9.0 / 7.4	10.5 / 9.0 / 7.4
Fan Motor	H / M / L	rpm	1,089 / 930 / 771	1,089 / 930 / 771
		Motor Output	0.17	
Fan	Type		Sirocco Fan	
External Static Pressure	inH2O		Standard 0.20 (0.60 - 0.12)	
	Pa		Standard 50 (150 - 30)	
Running Current (Rated)	A	0.44 - 0.40	0.44 - 0.40	
Power Consumption (Rated)	W	89 - 89	89 - 89	
Power Factor (Rated)	%	97.0 - 97.6	97.0 - 97.6	
Dimensions (H x W x D)	in. (mm)	9-5/8 x 27-9/16 x 31-1/2 (245 x 700 x 800)		
Weight (Mass)	lbs (kg)	64 (29)		
Sound Pressure Level	dB(A)	33	33	
Remote Controller (Option)	Wired		BRC1E73	
	Wireless		BRC082A43	

Daikin Comfort Technologies North America, Inc 19001 Kermier Rd Waller TX 77484  
 Daikin City Generated Submittal Data [www.daikincomfort.com](http://www.daikincomfort.com) or [www.daikinac.com](http://www.daikinac.com)

(Daikin's products are subject to continuous improvements. Daikin reserves the right to modify product design, specifications, and information in this data sheet without notice and without incurring any obligations)



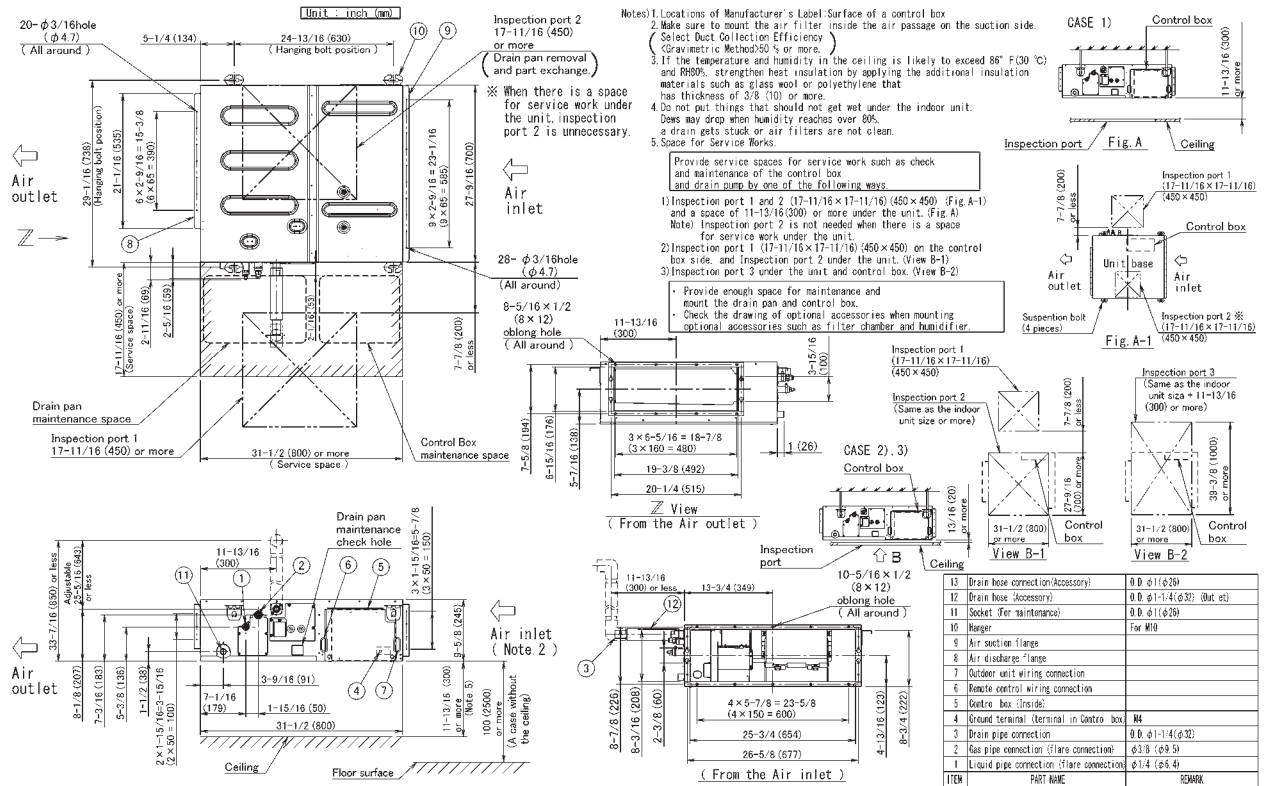
Submittal Data Sheet  
 1-Ton Duct Concealed and Heat Pump  
 FDMQ12WVJU9RXL12WMVJU9

Outdoor Unit			RXL12WMVJU9	
Casing Color			Ivory White	
Heat Exchanger	Fin Spec / Tube		Waffle Fin (PE) / φ 7 Hi-XSL Tube	
Fan Motor	Motor Output	HP	0.04	
Compressor	Type		Hermetically Sealed Swing Type	
	Model		2YC36PXD	
Refrigerant Oil	Type		FVC50K	
	Charge	oz (L)	21.98 (0.650)	
Refrigerant	Type		R-410A	
	Charge	lbs (kg)	2.09 (0.95)	
Airflow Rate		cfm (m3/min)	1,144 (32.4)	1,031 (29.2)
Fan	Type		Propeller	
Running Current (Rated)		A	5.46 - 4.94	5.49 - 4.96
Power Consumption (Rated)		W	1,124 - 1,124	1,132 - 1,132
Power Factor (Rated)		%	99.0 - 98.9	99.1 - 99.2
Dimensions (H x W x D)		in. (mm)	21-5/8 x 26-9/16 x 11-3/16 (550 x 675 x 284)	
Weight (Mass)		lbs (kg)	73 (33)	
Sound Pressure Level		dB(A)	50	50
Conditions Based on	Indoor		80.0°FDB (26.7°CDB) /67.0°FWB 19.4°CWB)	70.0°FDB (21.1°CDB) /60.0°FWB 15.6°CWB)
	Outdoor		95.0°FDB (35.0°CDB) /75.0°FWB 24.0°CWB)	47.0°FDB (8.3°CDB) / 43.0°FWB (6.1°CWB)
	Piping Length		25 ft (7.5 m)	

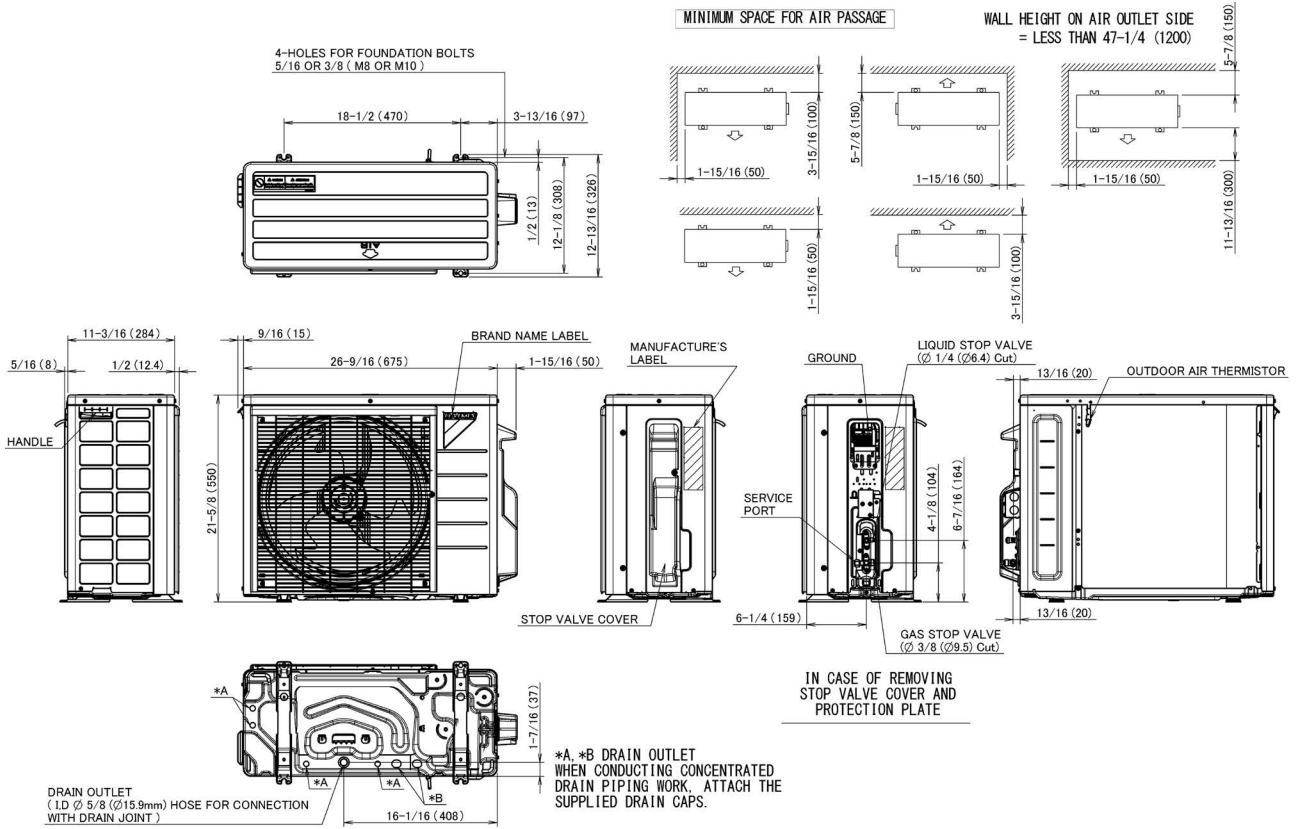
Daikin Comfort Technologies North America, Inc 19001 Kermier Rd Waller TX 77484  
 Daikin City Generated Submittal Data [www.daikincomfort.com](http://www.daikincomfort.com) or [www.daikinac.com](http://www.daikinac.com)

(Daikin's products are subject to continuous improvements. Daikin reserves the right to modify product design, specifications, and information in this data sheet without notice and without incurring any obligations)

# FDMQ12WVJU9



# Outdoor Unit RXL09/12WMVJU9



# 11. Electric Characteristics

Indoor Unit	Outdoor Unit	Power Supply				Compressor	OFM			IFM		
		Hz - Volts	Voltage Range	MCA	MFA		RLA	Hp	W	FLA	Hp	W
FTX09WMVJU9	RXL09WMVJU9	60 Hz - 208 V 60 Hz - 230 V	Max. 60 Hz, 253 V Min. 60 Hz, 187 V	8.7	15	8.5	0.03	23	0.19	0.03	21	0.20
FTX12WMVJU9	RXL12WMVJU9	60 Hz - 208 V 60 Hz - 230 V	Max. 60 Hz, 253 V Min. 60 Hz, 187 V	12.2	15	12.0	0.04	27	0.21	0.04	28	0.23
FTX15WMVJU9	RXL15WMVJU9	60 Hz - 208 V 60 Hz - 230 V	Max. 60 Hz, 253 V Min. 60 Hz, 187 V	12.2	15	12.0	0.12	93	0.58	0.05	33	0.23
FTX18WVJU9	RXL18WMVJU9	60 Hz - 208 V 60 Hz - 230 V	Max. 60 Hz, 253 V Min. 60 Hz, 187 V	18.6	20	18.3	0.16	122	0.77	0.07	48	0.37
FTX24WVJU9	RXL24WMVJU9	60 Hz - 208 V 60 Hz - 230 V	Max. 60 Hz, 253 V Min. 60 Hz, 187 V	18.8	20	18.3	0.16	122	0.77	0.07	48	0.57
FVXS09WVJU9	RXL09WMVJU9	60 Hz - 208 V 60 Hz - 230 V	Max. 60 Hz, 253 V Min. 60 Hz, 187 V	8.7	15	8.5	0.03	23	0.19	0.02	12	0.21
FVXS12WVJU9	RXL12WMVJU9	60 Hz - 208 V 60 Hz - 230 V	Max. 60 Hz, 253 V Min. 60 Hz, 187 V	12.2	15	12.0	0.04	27	0.21	0.02	13	0.22
FVXS15WVJU9	RXL15WMVJU9	60 Hz - 208 V 60 Hz - 230 V	Max. 60 Hz, 253 V Min. 60 Hz, 187 V	12.3	15	12.0	0.12	93	0.58	0.03	23	0.29
FDMQ12WVJU9	RXL12WMVJU9	60 Hz - 208 V 60 Hz - 230 V	Max. 60 Hz, 253 V Min. 60 Hz, 187 V	12.6	15	12.0	0.04	27	0.21	0.17	130	0.63
FDMQ18WVJU9	RXL18WMVJU9	60 Hz - 208 V 60 Hz - 230 V	Max. 60 Hz, 253 V Min. 60 Hz, 187 V	19.1	20	18.3	0.16	122	0.77	0.31	230	0.84
FDMQ24WVJU9	RXL24WMVJU9	60 Hz - 208 V 60 Hz - 230 V	Max. 60 Hz, 253 V Min. 60 Hz, 187 V	19.3	20	18.3	0.16	122	0.77	0.31	230	1.10

**Symbols:**

- MCA : Min. circuit amps (A)
- MFA : Max. fuse amps (A)
- RLA : Rated load amps (A)
- OFM : Outdoor fan motor
- IFM : Indoor fan motor
- FLA : Full load amps (A)
- W / Hp : Fan motor rated output (W, Hp)

**Notes:**

1. RLA is the max current that comes in cooling operation and heating operation.
2. Maximum allowable voltage variation between phases is 2%.
3. Select wire size based on the larger value of MCA.

C: 3D143137  
C: 3D143133A